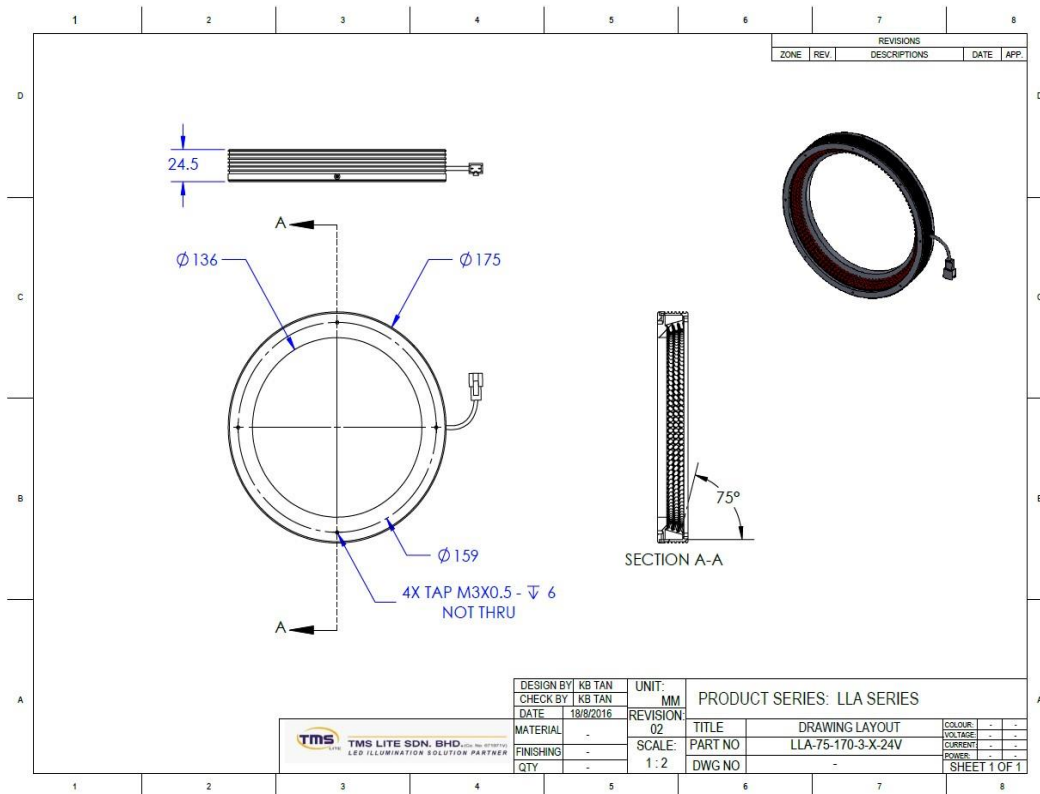


ILLUMINATOR DATA

LTZZ0170-75-3-B-24V

Lighting Dimension



ROHS **CE**
COMPLIANT

Mechanical Information

Casing Material	Aluminium
Storage Temperature Range	0 - 45°C
Storage Humidity Range	20 - 85%
Weight	410g
Length / Outer Diameter	175mm
Width / Inner Diameter	136mm
Thickness / Height	24.5mm

ILLUMINATOR DATA

LTZZO170-75-3-B-24V

Lighting Information			
Part Number	LTZZO170-75-3-B-24V		
LED Color	BLUE		
Wavelength	470nm		
Working Distance	6	11	16
Intensity (±15%)	10320lx	12790lx	16710lx
Illumination (number of row)	3		
Illumination Active Area	Active Length / Outer Dia.		160mm
	Active Width / Inner Dia.		136mm
Emission angle	0		
Eye Safety Class (IEC62471)	II		
Chromaticity Table For White colour only	Nil		

Electrical Information	
Rated Constant Voltage	24V±2%
Rated Constant Current	735mA
Power Consumption	17.64W
Casing temperature, After 60 minutes operation	46.1 °C


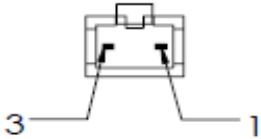
Strobe Mode Specification		
*Normal Strobe Voltage	24 V	
*Normal Strobe Current	735mA	
Overdrive Voltage Range	Min: 36V	Max: 48V
Overdrive Current Range	Min: 2.72 A	Max: 4.8 A
Recommended Overdrive Voltage	36V	
**Max. Trigger Pulse Duration	10 msec	
**Max. Duty Cycle	10%	

*Normal strobe means the lighting is operated using the rated power. Overdrive means the power supplied to the lighting exceeded the rated power.


**Overdrive condition must not exceed the max. trigger pulse duration and max. duty cycle.

ILLUMINATOR DATA

LTZZ0170-75-3-B-24V

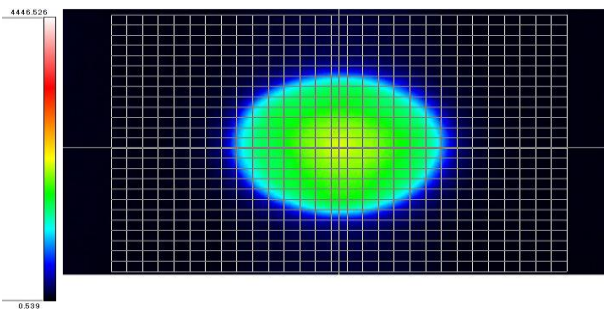
Connection Information			
Connector Type (Default)	JST SMR-03V		
Cable Length	50 cm		
Pin Configuration 	Pin	Signal	Cable Colour
	1	LED +	Red
	2	N.C	-
	3	LED -	White
			

Additional Information	
Additional Cooling Method	Attached to machine part for better heat dissipation
Intensity Controller Selection	SD, ST, ANG, LC, SDA, SDP series
CE Conformity	YES
RoHS Compliance	YES

Application	
Illumination Type	Direct Illumination
Application Use	Edge Detection, Scratched On Metal or Glossy Surface 

ILLUMINATOR DATA

LTZZ0170-75-3-B-24V

Lighting Pattern				
Working Distance	11mm			
Display and Image				
Data Results	Horizontal	Meas.(mm)	Vertical	Meas.(mm)
	90%	32	90%	40
	80%	62	80%	81
	70%	93	70%	108
	60%	117	60%	125
	50%	126	50%	131
	40%	132	40%	137
	30%	138	30%	143
	20%	145	20%	150
	10%	156	10%	170
	Max	Meas.(cd/m2)		
		2148.831		